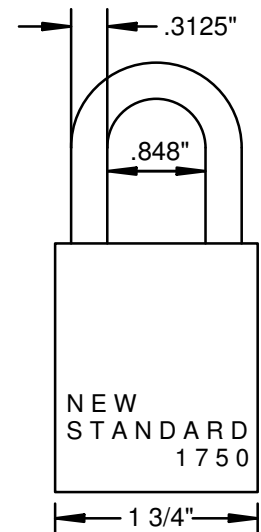
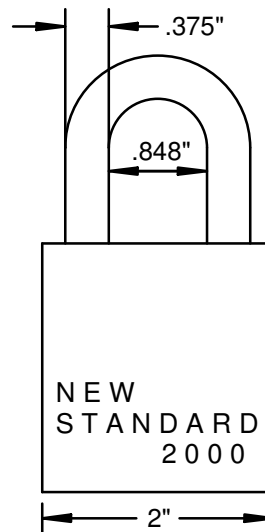
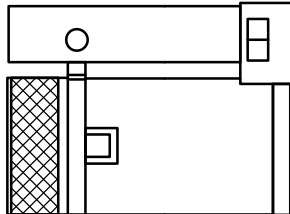
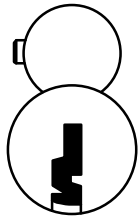


NEW STANDARD® MFG. CO

ADAPTABLE PADLOCK SYSTEM™

FOR SCHLAGE LARGE
FORMAT INTERCHANGEABLE
CORE CYLINDERS



ACCEPTS ALL SCHLAGE LARGE
FORMAT
INTERCHANGEABLE CORE
CYLINDERS INCLUDING PRIMUS
AND EVEREST

COMPETITIVELY PRICED

PATENTED

MADE IN U. S. A.

SYSTEM WIDE FEATURES
COMMON TO ALL MODELS

INVENTORS OF THE DUAL
FUNCTION PADLOCK
OUR NON-KEY RETAINING
CONVERTIBLE (NKR-CV) FUNCTION
PADLOCK'S PATENTED DESIGN
ALLOWS LOCKSMITH TO CHOOSE
PADLOCK FUNCTION; KR (KEY
RETAINING) OR NKR (NON-KEY
RETAINING) AT TIME OF CYLINDER
INSTALLATION. STOCK ONE MODEL
FOR EITHER FUNCTION REQUEST,
CUT INVENTORY IN HALF!
ECONOMICAL KR (KEY RETAINING)
ONLY MODEL ALSO AVAILABLE.

ELLIPTICAL SOLID BRASS BODY

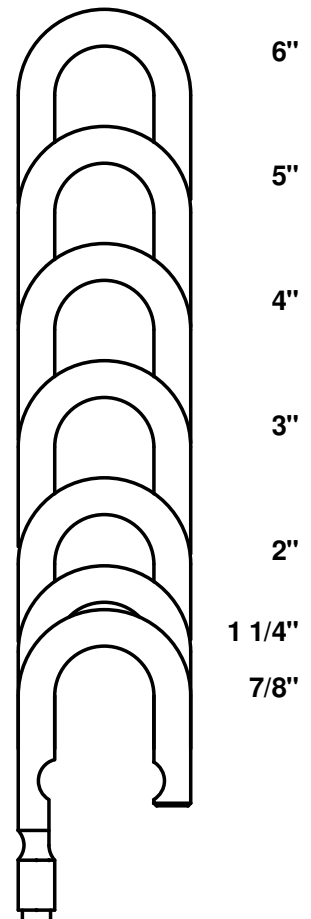
DOUBLE BALL LOCKING DESIGN

1 3/4" (MODEL 1750) OR 2" (MODEL
2000) BODY WIDTHS

FURNISHED: LESS CYLINDER

ALL PARTS ARE CORROSION
RESISTANT STAINLESS STEEL OR
BRASS AND ARE COMPLETELY
INTERCHANGEABLE.

3 SHACKLE MATERIALS:
HARDENED STEEL, STAINLESS
STEEL, AND BRASS, 7 BASIC
SHACKLE LENGTHS, 8" AND 12"
AVAILABLE IN STAINLESS STEEL.
(1 1/4" IS STANDARD)



DISTRIBUTED BY:

NEW STANDARD
MANUFACTURING COMPANY
7005 SPEEDWAY
BLVD., BLDG. F111
LAS VEGAS, NEVADA 89115
702-649-0599 FAX 702-649-0544
e-mail:
newstandardmfg@mindspring.com

PRICE LIST: NEW STANDARD PADLOCKS FOR SCHLAGE LARGE FORMAT INTERCHANGEABLE CORE CYLINDERS

September 1, 2011

PADLOCKS WITH HARDENED STEEL SHACKLES

DESCRIPTION	7/8"	1 1/4"	2"	3"	4"	5"	6"
1750 KR	189-107	189-112	189-120	189-130	189-140	189-150	189-160
KR FUNCTION ONLY	\$ 56.73	\$ 56.73	\$ 58.33	\$ 61.25	\$ 63.55	\$ 65.55	\$ 67.87
2000 KR	214-107	214-112	214-120	214-130	214-140	214-150	214-160
KR FUNCTION ONLY	\$ 67.74	\$ 67.74	\$ 69.68	\$ 73.68	\$ 76.18	\$ 79.46	\$ 81.98
1750 CONVERTIBLE	389-107	389-112	389-120	389-130	389-140	389-150	389-160
DUAL FUNCTION: KR OR NKR	\$ 57.79	\$ 57.79	\$ 59.39	\$ 62.31	\$ 64.61	\$ 66.61	\$ 68.93
2000 CONVERTIBLE	414-107	414-112	414-120	414-130	414-140	414-150	414-160
DUAL FUNCTION: KR OR NKR	\$ 68.80	\$ 68.80	\$ 70.74	\$ 74.74	\$ 77.24	\$ 80.52	\$ 83.04

PADLOCKS WITH STAINLESS STEEL SHACKLES

DESCRIPTION	7/8"	1 1/4"	2"	3"	4"	5"	6"
1750 KR	189-007	189-012	189-020	189-030	189-040	189-050	189-060
KR FUNCTION ONLY	\$ 56.73	\$ 56.73	\$ 58.33	\$ 61.25	\$ 63.55	\$ 65.55	\$ 67.87
2000 KR	214-007	214-012	214-020	214-030	214-040	214-050	214-060
KR FUNCTION ONLY	\$ 67.74	\$ 67.74	\$ 69.68	\$ 73.68	\$ 76.18	\$ 79.46	\$ 81.98
1750 CONVERTIBLE	389-007	389-012	389-020	389-030	389-040	389-050	389-060
DUAL FUNCTION: KR OR NKR	\$ 57.79	\$ 57.79	\$ 59.39	\$ 62.31	\$ 64.61	\$ 66.61	\$ 68.93
2000 CONVERTIBLE	414-007	414-012	414-020	414-030	414-040	414-050	414-060
DUAL FUNCTION: KR OR NKR	\$ 68.80	\$ 68.80	\$ 70.74	\$ 74.74	\$ 77.24	\$ 80.52	\$ 83.04

PADLOCKS WITH BRASS SHACKLES

DESCRIPTION	7/8"	1 1/4"	2"	3"	4"	5"	6"
1750 KR	189-207	189-212	189-220	189-230	189-240	189-250	189-260
KR FUNCTION ONLY	\$ 56.73	\$ 56.73	\$ 58.33	\$ 61.25	\$ 63.55	\$ 65.55	\$ 67.87
2000 KR	214-207	214-212	214-220	214-230	214-240	214-250	214-260
KR FUNCTION ONLY	\$ 67.74	\$ 67.74	\$ 69.68	\$ 73.68	\$ 76.18	\$ 79.46	\$ 81.98
1750 CONVERTIBLE	389-207	389-212	389-220	389-230	389-240	389-250	389-260
DUAL FUNCTION: KR OR NKR	\$ 57.79	\$ 57.79	\$ 59.39	\$ 62.31	\$ 64.61	\$ 66.61	\$ 68.93
2000 CONVERTIBLE	414-207	414-212	414-220	414-230	414-240	414-250	414-260
DUAL FUNCTION: KR OR NKR	\$ 68.80	\$ 68.80	\$ 70.74	\$ 74.74	\$ 77.24	\$ 80.52	\$ 83.04

PADLOCK BODIES ONLY, COMPLETE, LESS SHACKLE

DESCRIPTION	
1750 KR	189-000
KR FUNCTION ONLY	\$ 49.07
2000 KR	214-000
KR FUNCTION ONLY	\$ 57.52
1750 CONVERTIBLE	389-000
DUAL FUNCTION: KR OR NKR	\$ 50.13
2000 CONVERTIBLE	414-000
DUAL FUNCTION: KR OR NKR	\$ 58.58

SHACKLES ONLY

DESCRIPTION	7/8"	1 1/4"	2"	3"	4"	5"	6"	8"	12"
FOR MODEL 1750	917-107	917-112	917-120	917-130	917-140	917-150	917-160		
HARDENED STEEL	\$ 7.66	\$ 7.66	\$ 9.26	\$ 12.18	\$ 14.48	\$ 16.48	\$ 18.80		
STAINLESS STEEL	\$ 7.66	\$ 7.66	\$ 9.26	\$ 12.18	\$ 14.48	\$ 16.48	\$ 18.80	\$ 28.96	\$ 37.60
BRASS	\$ 7.66	\$ 7.66	\$ 9.26	\$ 12.18	\$ 14.48	\$ 16.48	\$ 18.80		
FOR MODEL 2000	920-107	920-112	920-120	920-130	920-140	920-150	920-160		
HARDENED STEEL	\$ 10.22	\$ 10.22	\$ 12.16	\$ 16.16	\$ 18.66	\$ 21.94	\$ 24.46		
STAINLESS STEEL	\$ 10.22	\$ 10.22	\$ 12.16	\$ 16.16	\$ 18.66	\$ 21.94	\$ 24.46	\$ 37.36	\$ 48.90
BRASS	\$ 10.22	\$ 10.22	\$ 12.16	\$ 16.16	\$ 18.66	\$ 21.94	\$ 24.46		